

zippo[®]

2012 HARLEY - DAVIDSON[®] COLLECTION



Part Number – Page
Number Cross
Reference Table

200HD.H199 2
 200HD.H2317
 200HD.H252 3
 200HD.H2847
 218HD.H252..... 2
 2406C..... 9
 2406N 9
 2425 9
 3141..... 9
 3165 9
 20229.....7
 20230.....7
 20711..... 6
 21046 8
 24025 8
 247755
 249545
 28081..... 3
 28082.....5
 28083..... 2
 28084..... 2
 28085..... 4
 28228..... 3
 28229..... 4
 28264..... 4
 28265.....5
 28266..... 6
 28267 4
 HDP61
 HDPBK 9



Unless otherwise stated, every Zippo windproof lighter in this catalog is packaged in the environmentally friendly “one box”, designed to address the growing concern over the depletion of our natural resources. Both the attractive gift box and the cardboard insert are made from renewable materials and are 100% recyclable. The patented “one box” is attractive, easy to handle, and designed to display more of the lighter than ever.

Because we are constantly improving our products, some items may not look exactly as depicted. Prices and specifications subject to change without notice.

Terms and pricing are limited to authorized Zippo sales distributors and wholesalers only. Unless specified as retail pricing, this information is not intended for consumer use.

Worldwide. Some restrictions may apply.



HDP6

H-D® Lighter Pouch Gift Set

Lighter Pouch Gift Set includes black leather pouch in a handsome gift box. Add any lighter to create a custom gift set. (Lighter not included.)

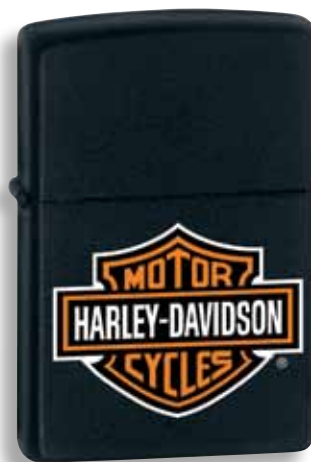




200HD.H199
Brushed Chrome



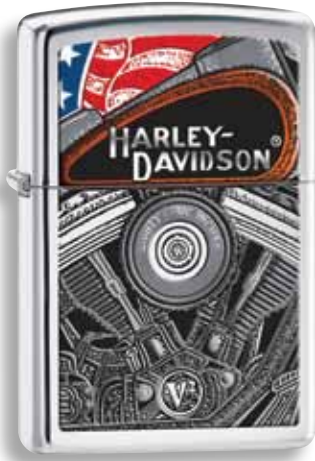
28084
Street Chrome



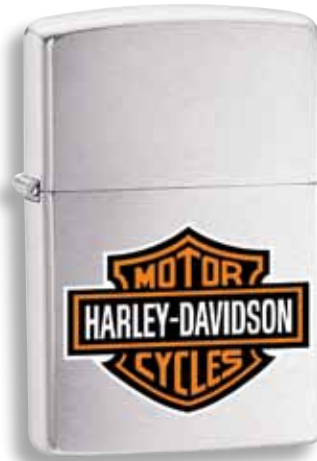
218HD.H252
Black Matte



28083
High Polish Chrome



28081
High Polish Chrome



200HD.H252
Brushed Chrome



28228 **NEW**
Brushed Chrome





Made with
**CRYSTAL
LIZED**
SWAROVSKI ELEMENTS

28267 NEW
Emblem Brushed Chrome



28229 NEW
High Polish Chrome



28264 NEW
Black Matte



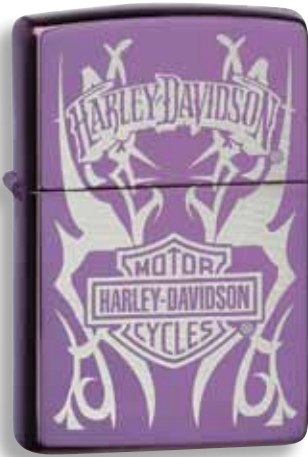
28085
Black Matte



28265 NEW
High Polish Chrome



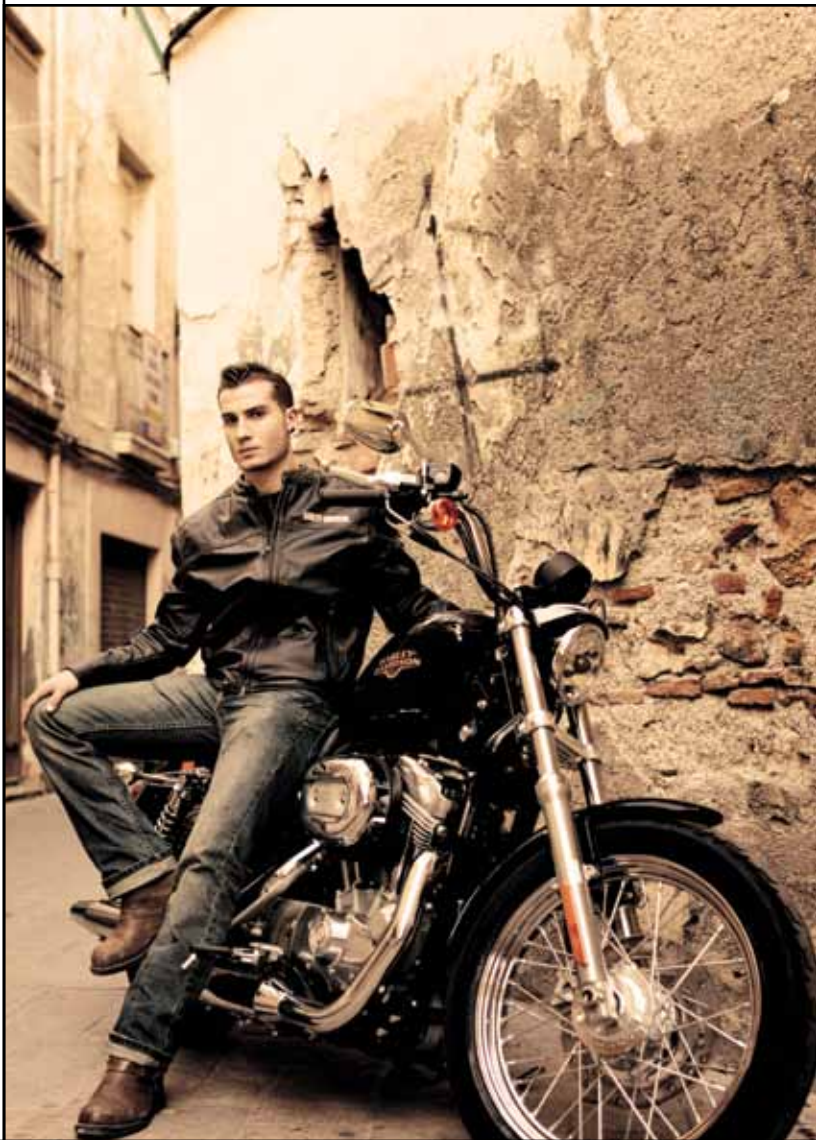
24775
High Polish Chrome



24954
Abyss



28082
High Polish Chrome





20711
Sapphire



28266 NEW
High Polish Chrome



20229
Emblem
Street Chrome



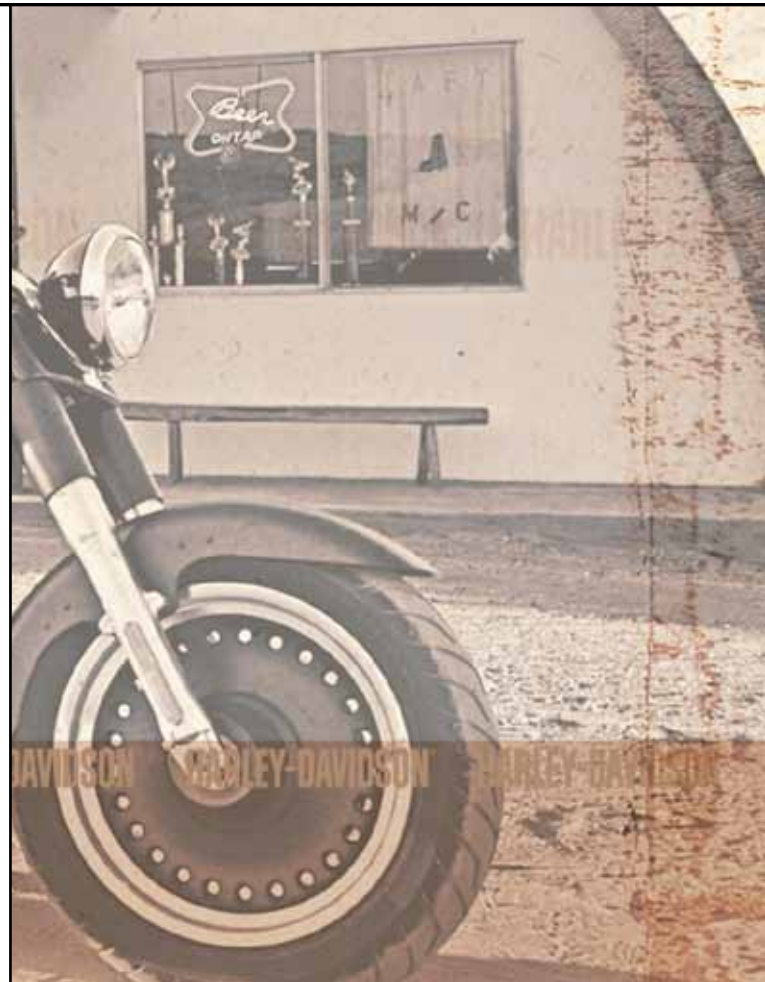
20230
Emblem
Street Chrome



200HD.H231
Emblem
Brushed Chrome



200HD.H284
Emblem
Brushed Chrome





21046
Brushed Chrome



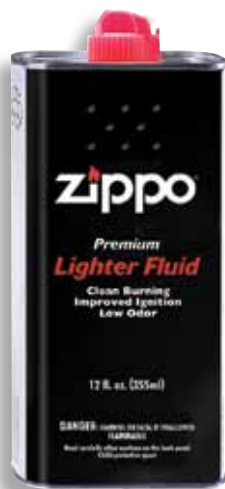
24025
Satin Chrome



For optimum performance of every Zippo windproof pocket lighter,
we recommend genuine Zippo flints, wicks, and premium lighter fluid.



3141
Lighter Fluid 4 oz.
(shipping carton of 24)
(No.3341 carton of 12)



3165
Lighter Fluid 12 oz.
(shipping carton of 24)
(No.3365 carton of 12)



2406C
Six Flint Dispenser -
24 per Display Card



2425
Wick Cards - 24 cards
per display box; 24
boxes per master carton



2406N
Flint cards - 24 cards
per display box; 24
boxes per master carton



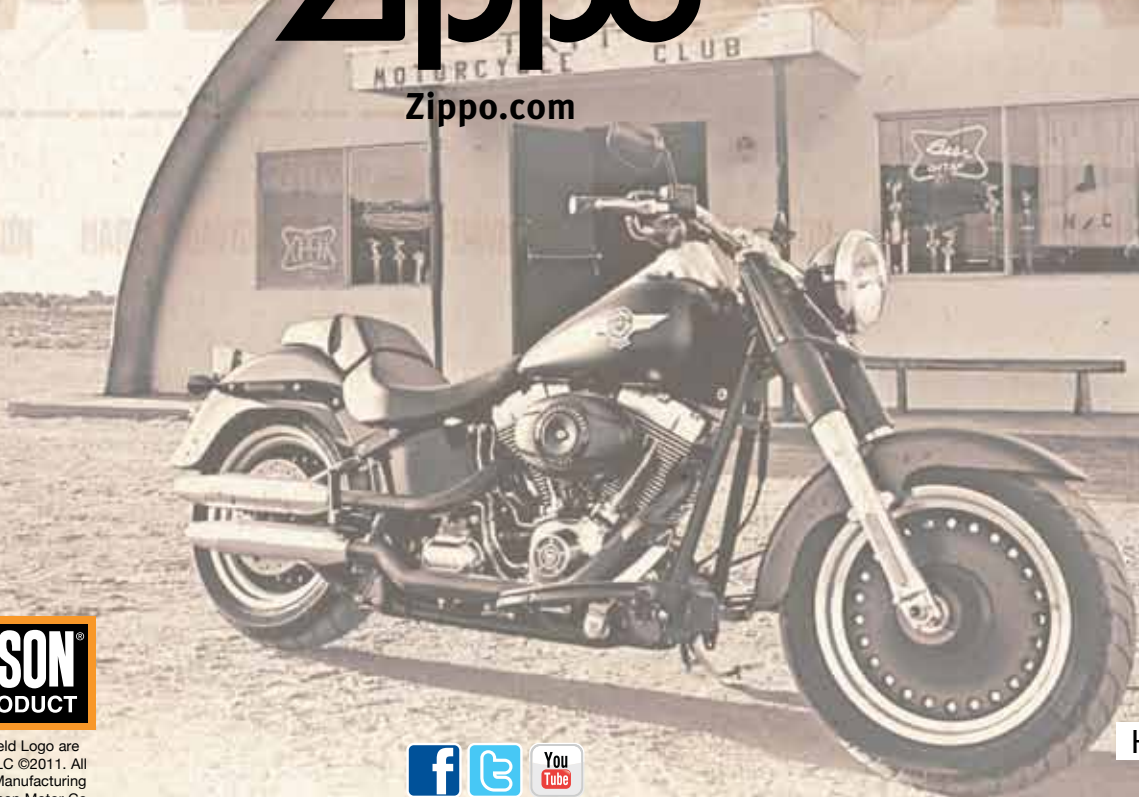
HDPBK
H-D® Lighter Pouch
w/ Loop - Black

HARLEY-DAVIDSON



zippo[®]

Zippo.com



HARLEY-DAVIDSON[®]
OFFICIAL LICENSED PRODUCT

Harley, Harley-Davidson and the Bar & Shield Logo are among the trademarks of H-D Michigan, LLC ©2011. All Rights Reserved. Manufactured by Zippo Manufacturing Company under license from Harley-Davidson Motor Co.



HDU12